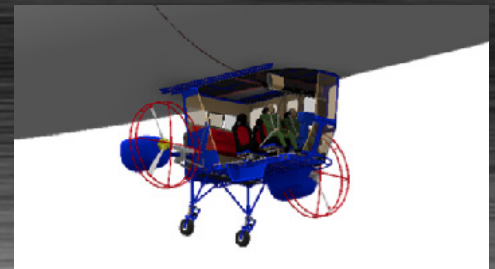


SKY DRAGON PAYLOAD OPTIONS

Item
GMTI RADAR SYSTEMS
ELECTRO-OPTIC / INFRARED CAMERAS
SHOOTER DETECTOR SYSTEM
WIRELESS ROUTER SYSTEM
EXTENDED WIRELESS (20 OR 50 MILE LOS)
CELL PHONE REPEATER / INDUSTRIAL 5-BAND REPEATER
JAMMER SYSTEM (CELL PHONE)
ID CELL PHONE DETECTOR / DIGITAL RECEIVER TECHNOLOGY
REMOTE CONTROLLED WEAPON STATION
SWITCHBLADE SMART RPG
PAYLOAD MOUNTING
PAYLOAD INTEGRATION
PAYLOAD PLUG AND PLAY SYSTEM
RUGGEDIZED TABLET INTERFACE
INTEGRATION




MULTI-MODE RADAR

- » GMTI
- » Priority track
- » Long range search
- » Small target mode




**ELECTRO-OPTIC/
INFRARED CAMERA**

- » Gyro stabilized
- » Full HD (optional)
- » Up to 30 KM day recognition
- » Up to 20 KM night recognition



COMMS SUITE

- » Radio retransmission
- » Wi-Fi
- » Cell phone detector
- » Frequency jammer




WIRELESS ANTENNA

- » 20 or 50 mile LOS
- » Resists jamming and interference
- » Available L band to Ka band



GUNSHOT DETECTION

- » Superior detection
- » Single shot, burst fire, and multiple shooter recognition
- » 360° field of view
- » Reports threat weapon classification



REMOTE WEAPON

Remotely operated weapon system (ROWS) supports various weapons.

RADAR SYSTEMS

NADATS supplies a family of surveillance radars delivering leading edge capability, covering both air-to-surface and air-to-air environments. Examples include:

- » **Telephonics RDR-1700B:** Maritime surveillance and imaging radar can search, detect, and track multiple over water targets up to 120NM (provided LOS)
- » **Selex Seaspray 5000E:** Employs the Seaspray AESA family common processor, coupled with a compact state-of-the-art AESA antenna to deliver a 200NM range (provided LOS)
- » **Selex Seaspray 7500E:** Employs the Seaspray AESA family common processor, providing peak performance in all modes to deliver a 320NM range (provided LOS)

EO/IR CAMERA SYSTEMS

NADATS supplies imaging systems with high performance and low SWaP, compact in size, light weight and full featured. The NADATS family of cameras features electro-optic and infrared imaging. Illustrated systems have superior stability performance and are designed to maximize day and night surveillance. Examples:

- » **FLIR Star SAFIRE HD:** 30/20 km day/night imaging, full digital high-definition video from all imaging sensors, and with output video that meets US DOD and NATO specifications for HD acquisition.
- » **TASE 400 HD:** Features continuous zoom MWIR, onboard GPS/INS, target track, and image stabilization

SHOOTER DETECTION SYSTEM

- » Superior detection of single shots, burst fire, multiple bursts, or multiple shooters
- » Reports relative shooter range, azimuth, and elevation for first round fired
- » Reports threat weapon classification

COMMUNICATIONS OPTIONS

- » Wireless router with antenna extends up to 20 or 50 mile LOS
- » Industrial 5-band repeater / cell phone repeater
- » Frequency Jammer blocks 800-2500MHz, WiFi, Bluetooth, GPS, and many more
- » Cell phone detector monitors up to 72 channels simultaneously

THREAT RESPONSE

- » **Remote Weapon Station:** 24/7 day and night threat response unit supports a wide range of weapons and deploys in less than 5-seconds

RUGGEDIZED TABLET INTERFACE / FIELD CONTROL UNIT (FCU)

- » Integrates all imaging and communications data into one easy to use tablet